

RESEARCH ARTICLE

Open Access



A pre-post study of a multi-country scale up of resuscitation training of facility birth attendants: does Helping Babies Breathe training save lives?

Roopa M. Bellad¹, Akash Bang², Waldemar A. Carlo³, Elizabeth M. McClure⁴, Sreelatha Meleth⁴, Norman Goco⁴, Shivaprasad S. Goudar¹, Richard J. Derman⁵, Patricia L. Hibberd⁶, Archana Patel^{7,8}, Fabian Esamai⁹, Sherri Bucher¹⁰, Peter Gisore⁹, Linda L. Wright^{11,12*} and for the HBB Study Group

Abstract

Background: Whether facility-based implementation of Helping Babies Breathe (HBB) reduces neonatal mortality at a population level in low and middle income countries (LMIC) has not been studied. Therefore, we evaluated HBB implementation in this context where our study team has ongoing prospective outcome data on all pregnancies regardless of place of delivery.

Methods: We compared outcomes of birth cohorts in three sites in India and Kenya pre-post implementation of a facility-based intervention, using a prospective, population-based registry in 52 geographic clusters. Our hypothesis was that HBB implementation would result in a 20 % decrease in the perinatal mortality rate (PMR) among births ≥ 1500 g.

Results: We enrolled 70,704 births during two 12-month study periods. Births within each site did not differ pre-post intervention, except for an increased proportion of < 2500 g newborns and deliveries by caesarean section in the post period. There were no significant differences in PMR among all registry births; however, a post-hoc analysis stratified by birthweight documented improvement in < 2500 g mortality in Belgaum in both registry and in HBB-trained facility births. No improvement in < 2500 g mortality measures was noted in Nagpur or Kenya and there was no improvement in normal birth weight survival.

Conclusions: Rapid scale up of HBB training of facility birth attendants in three diverse sites in India and Kenya was not associated with consistent improvements in mortality among all neonates ≥ 1500 g; however, differential improvements in < 2500 g survival in Belgaum suggest the need for careful implementation of HBB training with attention to the target population, data collection, and ongoing quality monitoring activities.

Trial registration: The study was registered at ClinicalTrials.gov: NCT01681017.

* Correspondence: lindawright.md@gmail.com

¹¹Eunice Kennedy Shriver National Institute of Child Health and Human Development, Bethesda, MD, USA

¹²5800 Nicholson Lane, #1206, Rockville, MD 20852, USA

Full list of author information is available at the end of the article



© 2016 The Author(s). **Open Access** This article is distributed under the terms of the Creative Commons Attribution 4.0 International License (<http://creativecommons.org/licenses/by/4.0/>), which permits unrestricted use, distribution, and reproduction in any medium, provided you give appropriate credit to the original author(s) and the source, provide a link to the Creative Commons license, and indicate if changes were made. The Creative Commons Public Domain Dedication waiver (<http://creativecommons.org/publicdomain/zero/1.0/>) applies to the data made available in this article, unless otherwise stated.

Background

Helping Babies Breathe, a modification of the Neonatal Resuscitation Program specifically designed for low resource settings, focuses on establishing breathing during the “Golden Minute” after birth by immediately drying/stimulating the baby to initiate spontaneous respiration, followed by bag and mask ventilation, as needed [1]. It has been shown to be effective in several low and middle income countries LMIC in reducing early neonatal deaths for infants born in health facilities [2, 3]. However, in many such countries, a large percentage of infants are born outside of health facilities. It is not known what effect an HBB program would have on overall neonatal mortality of the population in diverse settings, including those with large numbers of home births.

A major emphasis of the World Health Organization has been to encourage women to choose to deliver in a health facility with a skilled birth attendant (BA) [4]. The reasons women choose to deliver at home rather than in hospitals are multifactorial and complex; however, a recurring theme is mistrust of the health care system and lack of confidence that a facility birth will result in a better outcome than a home birth [5–7].

It is unknown whether facility based interventions, such as HBB, will reduce neonatal mortality at a population level in LMIC with large numbers of home births. We therefore chose to evaluate HBB in one African site and two Indian sites where our study team has ongoing prospective outcome data on all pregnancies regardless of place of delivery. In Kenya, home births account for approximately 50 % of total births, while in India most women now deliver in hospitals [8]. The primary outcome was perinatal mortality, defined in our study as the sum of all fresh, non-macerated stillbirths and early (<24 h of age) neonatal deaths within defined geographic areas, regardless of place of delivery. The rationale for this study design was 1). To test the possibility that by improving the care infants receive in facilities, an increased number of expectant mothers would choose to deliver in facilities, and 2). To demonstrate a reduction in overall neonatal mortality at the population level. If achieved, these would have a large impact on public health and hence be likely to be implemented by the health care system following the study.

The present study is the first to use a large Asian and sub-Saharan African sample, a common design, training model, resuscitation equipment, educational materials, and monitoring activities to evaluate whether HBB may have a major impact on perinatal mortality, improve implementation, and guide future policy and investment as we move toward Sustainable Development Goals [9]. The objective of this study was to assess the impact of implementing a package of HBB interventions and monitoring in select health facilities representing a large

proportion of site facility births on the PMR of all registry births in Indian and Kenyan sites.

Methods

Study sites and population

The detailed study methods published elsewhere [8, 10–12] are summarized below. This pre-post study was conducted in three research sites of the *Eunice Kennedy Shriver* National Institute of Child Health and Human Development Global Network for Women’s and Children’s Health Research (GN). The sites included semi-urban and rural communities in Belgaum and Nagpur, India, and rural communities in western Kenya. The GN’s Maternal and Newborn Health Registry (registry) was established in 2008. It is a prospective, population-based registry of all pregnancy and neonatal outcomes through 42 days postpartum in 52 clusters (defined geographic catchment areas) with 300–500 annual births. Inclusion criteria included facilities that provided delivery services 24 h per day/7 days per week and represented a significant proportion of the births in Belgaum (47 %), Nagpur (44 %), and western Kenya (38 %). Belgaum’s participating health facilities included 19 primary level (no caesarean [c]-section), 12 secondary (c-section staff on call), and 2 tertiary (c-section staff in hospital 24 h/day) facilities; Nagpur had 2 primary, 4 secondary, and 9 tertiary facilities; Kenya had 18 primary and 5 secondary facilities (Table 1).

Procedures and intervention

All facilities and Master Trainers received HBB training materials and equipment (Laerdal NeoNatalie® equipment and materials and clean delivery kits) based on delivery volume. The American Academy of Pediatrics HBB core staff identified best HBB training practices, assisted in developing two tiers of training workshops, and co-led the initial Master Trainer (MT) workshops. The initial single-country MT courses provided intense, hands-on training to provide at least one MT per facility in order to preserve the integrity of the intervention and expedite startup. The newly-trained MTs then conducted multiple facility-level BA team trainings with standard HBB knowledge and skills evaluation before and after the initial and refresher training courses approximately 6 months later, using the same interactive format with a maximum ratio of 6 BAs per MT. Staff turnover was addressed by providing HBB training to each new BA. The monitoring activities included direct supervision, team building and accountability measures to maintain standardized delivery room records; daily checks of equipment availability and cleanliness, daily “low dose/high frequency” [13] bag and mask ventilation practice; resuscitation debriefings and death audits; observation of deliveries or HBB skills (using a neonatal simulator if no deliveries were available) during regular and unannounced

Table 1 Demographic and clinical characteristics of all registry births ≥ 1500 g pre-post HBB intervention

	Kenya		Nagpur, India		Belgaum, India		Total	
	Pre	Post	Pre	Post	Pre	Post	Pre	Post
Registry deliveries ^a , n	8875	8394	9461	9721	16,992	16,715	35,328	34,830
Birth location, n (%)								
Hospital	1203 (13.6)	1296 (15.4)	6323 (66.8)	6995 (72.0)	12,501 (73.6)	11,931 (71.4)	20,027 (56.7)	20,222 (58.1)
Clinic	2514 (28.3)	2791 (33.2)	2966 (31.4)	2638 (27.1)	3708 (21.8)	4098 (24.5)	9188 (26.0)	9527 (27.4)
Home/Other	5158 (58.1)	4307 (51.3)	170 (1.8)	88 (0.9)	783 (4.6)	686 (4.1)	6111 (17.3)	5081 (14.6)
Birth attendant, n (%)								
Physician	209 (2.4)	203 (2.4)	5701 (60.3)	6289 (64.7)	10,446 (61.5)	10,149 (60.7)	16,356 (46.3)	16,641 (47.8)
Nurse/midwife	3617 (40.8)	3929 (46.8)	3597 (38.0)	3355 (34.5)	5838 (34.4)	5973 (35.7)	13,052 (36.9)	13,257 (38.1)
TBA	3930 (44.3)	3154 (37.6)	110 (1.2)	45 (0.5)	225 (1.3)	159 (1.0)	4265 (12.1)	3358 (9.6)
Family/unattended	1119 (12.6)	1108 (13.2)	53 (0.6)	32 (0.3)	483 (2.8)	434 (2.6)	1655 (4.7)	1574 (4.5)
Maternal education, n (%)								
No formal schooling	249 (2.8)	228 (2.7)	262 (2.8)	259 (2.7)	3091 (18.3)	2460 (14.7)	3602 (10.2)	2947 (8.5)
Primary	6174 (69.6)	5690 (68.4)	1575 (16.7)	1636 (16.9)	5300 (31.3)	5207 (31.2)	13,049 (37.0)	12,533 (36.0)
Secondary	2071 (23.3)	2019 (24.3)	5705 (60.4)	5669 (58.5)	6786 (40.1)	7005 (41.2)	14,562 (41.0)	14,693 (42.0)
University +	378 (4.3)	376 (4.5)	1899 (20.1)	2129 (22.0)	1730 (10.2)	2022 (12.1)	4007 (11.4)	4527 (13.0)
Maternal age, n (%)								
< 20	1933 (21.8)	1884 (22.7)	189 (2.0)	182 (1.9)	1650 (9.7)	1584 (9.5)	3772 (10.7)	3650 (10.5)
20–35	6595 (74.3)	6083 (73.2)	9226 (97.6)	9494 (97.8)	15,318 (90.1)	15,101 (90.3)	31,139 (88.2)	30,678 (88.3)
> 35	343 (3.9)	345 (4.1)	35 (0.37)	31 (0.32)	23 (0.14)	30 (0.18)	401 (1.1)	406 (1.2)
Parity ^a , n (%)								
0	2263 (25.5)	2232 (26.6)	4519 (47.8)	4568 (47.0)	7208 (43.5)	7253 (43.4)	13,990 (40.1)	14,053 (40.4)
1–2	3550 (40.0)	3269 (39.0)	4703 (49.7)	4892 (50.3)	8305 (50.1)	8486 (50.8)	16,558 (47.5)	16,647 (47.8)
> 2	3056 (34.5)	2883 (34.4)	236 (2.5)	258 (2.7)	1053 (6.4)	969 (5.8)	4345 (12.5)	4110 (11.8)
Labor complications, n (%)	1406 (15.8)	1269 (15.1)	1356 (14.3)	1530 (15.7)	2428 (14.3)	3050 (18.3)	5190 (14.7)	5849 (16.8)
Caesarean rate, n (%)	162 (1.8)	162 (1.9)	1879 (19.9)	2202 (22.7)	2509 (14.8)	3103 (18.6)	4550 (12.9)	5467 (15.7)
Multiple births, n (%)	99 (1.1)	102 (1.2)	57 (0.6)	68 (0.7)	122 (0.7)	103 (0.6)	278 (0.8)	273 (0.8)
Corticosteroids, n (%)								
Yes	59 (1.1)	124 (1.5)	123 (6.3)	416 (4.4)	422 (3.0)	1225 (7.3)	604 (2.8)	1765 (5.1)
No	5228 (98.9)	8209 (98.5)	1809 (92.8)	8880 (94.8)	13,746 (96.3)	15,446 (92.4)	20,783 (96.6)	32,535 (94.5)
Don't know	0 (0.0)	3 (0.04)	18 (0.92)	73 (0.78)	103 (0.72)	44 (0.46)	121 (0.56)	120 (0.35)
Registry births, n (%)	8972	8510	9514	9784	17,109	16,815	35,595	35,109
Male, n (%)	4582 (51.1)	4281 (50.3)	4998 (52.5)	5018 (51.3)	8927 (52.2)	8687 (51.7)	18,507 (52.0)	17,986 (51.2)
Birth weight (g) ^b , n (%)								
1500–2499	256 (2.9)	267 (3.2)	1336 (14.1)	1441 (14.7)	2261 (13.2)	3292 (19.7)	3853 (10.9)	5000 (14.3)
≥ 2500	8429 (97.1)	8145 (96.8)	8152 (85.9)	8336 (85.3)	14,824 (86.8)	13,441 (80.3)	31,405 (89.1)	29,922 (85.7)
Registry births ≥ 1500 g, n	8972	8510	9514	9784	17,109	16,815	35,595	35,109
Registry births ≥ 1500 g in facilities, n (%)	3778 (42.1)	4164 (48.9)	9342 (98.2)	9693 (99.1)	16,323 (95.4)	16,129 (95.9)	29,443 (82.7)	29,986 (85.4)
Registry births ≥ 1500 g in HBB-trained facilities, n (%)	3235 (36.1)	3481 (40.9)	4053 (42.6)	4373 (44.7)	7944 (46.4)	8131 (48.4)	15,232 (42.8)	15,985 (45.5)
Primary facility, n (%) ^c	2620 (81.0)	2733 (78.5)	207 (5.1)	227 (5.2)	2713 (34.2)	2924 (36.0)	5540 (36.4)	5884 (36.8)
Secondary facility, n (%)	615 (19.0)	748 (21.5)	432 (10.7)	521 (11.9)	3935 (49.5)	3930 (48.3)	4982 (32.7)	5199 (32.5)
Tertiary facility, n (%)	0 (0.0)	0 (0.0)	3414 (84.2)	3625 (82.9)	1296 (16.3)	1277 (15.7)	4710 (30.9)	4902 (30.7)
Non-HBB trained facilities, n (%)	543 (6.1)	683 (8.0)	5289 (55.6)	5320 (54.4)	8379 (49.0)	7998 (47.6)	14,211 (39.9)	14,001 (40.0)

^a Deliveries indicate number of mothers^b Birth weight measured or estimated within 7 days of delivery ($N = 516$ excluded). Birth weight values > 5500 g are excluded ($n = 8$)^c Primary facilities do not perform c-sections; secondary facilities have c-section staff on call; tertiary facilities have 24 h/7 days per week c-section staff available

site visits; review of monthly monitoring reports and biweekly data review calls between the individual site HBB coordinators and the central core staff (RTI International and NICHD), followed by feedback to facility MTs and BAs. The pre phase was defined as the 12-month period preceding the completion of initial BA training; the post period was defined as the subsequent 12 months. Sites were also trained in basic essential newborn care [14].

Study outcomes

The primary hypothesis was that implementation of the HBB package in facilities with substantial proportions of eligible registry newborns would decrease the PMR by 20 % among all registry births ≥ 1500 g in the 52 clusters. Secondary outcomes included the pre-post difference in the (1) fresh stillbirth rate (FSBR); (2) death by 1 day, including FSBs; and (3) 7-day neonatal mortality rate (NMR) among all live registry births and registry births in HBB-trained facilities. SBs were considered intrapartum or FSBs if they were not macerated (MSB). The PMR was estimated by dividing the sum of FSBs and live births dying within 7 days by all births, a modification of the common PMR definition to exclude MSBs that cannot be resuscitated. Day 1 mortality rate included FSB plus deaths by 24 h in the numerator and FSB and live births in the denominator; 7-day NMR included deaths of live births in the numerator and all live births in the denominator.

Data management

Primary outcome and key secondary outcome data were collected by an independent registry staff. The research staff at each site collected additional data to evaluate the HBB training program and monitoring activities in the facilities.

Power and statistical analysis

Consistent with the overall study goal outlined earlier, the study was powered to detect the overall public health impact of the intervention based on an assumption that the intervention would improve access and increase the number of facility births. We therefore estimated the power to detect the impact of implementation of HBB training in facilities to improve the mortality rates at the population (registry) level. Assuming a PMR of 25/1000 among newborns ≥ 1500 g, a standard deviation of 10 between clusters, and a correlation across the periods of 0.3 (based on historic registry data), the study had an estimated power of 82 % to detect a 20 % reduction in PMR among newborns ≥ 1500 g.

While the study was not powered to detect an interaction effect between intervention and site or to

detect differences in secondary mortality outcomes, the study had sufficient sample size to provide valuable information about these secondary outcomes, e.g., the effect of the intervention based on the subset of deliveries that occurred at the HBB trained health facilities. Under the original design assumptions about heterogeneity of risk across clusters and the correlation within clusters over time, the sample sizes within the HBB-facility deliveries provided 80 % power to detect a 30 % risk reduction and a 90 % power to detect a 35 % reduction in mortality risk in these facilities. Absent significant differences in the primary outcome or this important secondary outcome, the analyses were constructed to provide point and interval estimates of the magnitude of both public health and in-facility benefit obtained from the intervention.

The primary outcome was tested using a linear mixed model that incorporated a random cluster-effect term to account for correlation within clusters across time and a fixed binary-time effect (pre-post HBB) that represented the treatment effect. The dependent variable was the cluster PMR aggregated separately across the pre and post periods. Secondary mortality outcomes were analyzed using linear mixed models, incorporating both random-cluster effects and fixed effects for pre and post periods. The interaction between site and treatment was tested for the primary and secondary outcomes. Secondary parameter estimates of combinations of time and period evaluated whether the treatment effect changed over the course of the study.

Results

The pre period was November 1, 2011 to October 31, 2012; the post period was November 1, 2012 to October 31, 2013. The 115 MTs trained 2227 BAs from June to October 2012. A total of 70,704 registry births ≥ 1500 g were enrolled. A majority of registry births were in facilities and 46 % of all registry births took place in the 71 intervention facilities, attended by 835 trained BAs (medical doctors, midwives, nurses, or auxiliary midwives; Belgaum = 460; Nagpur = 230; Kenya = 145). 27 % of Belgaum's, 20 % of Nagpur's, and 26 % of Kenya's BAs reported receiving prior resuscitation training. Outcome data were available for 99.9 % of the births (Fig. 1).

Demographics, antenatal care, birth location, type of birth attendant, labor complications, and gender ratio were similar for the pre-post periods (Table 1); however, there was a 31 % increase in the proportion of low birth-weight (LBW = 1500–2499 g) newborns in the post compared to the pre period (14.3 vs. 10.9 %) and a 22 % increase in c-sections (15.7 vs. 12.9 %), respectively.

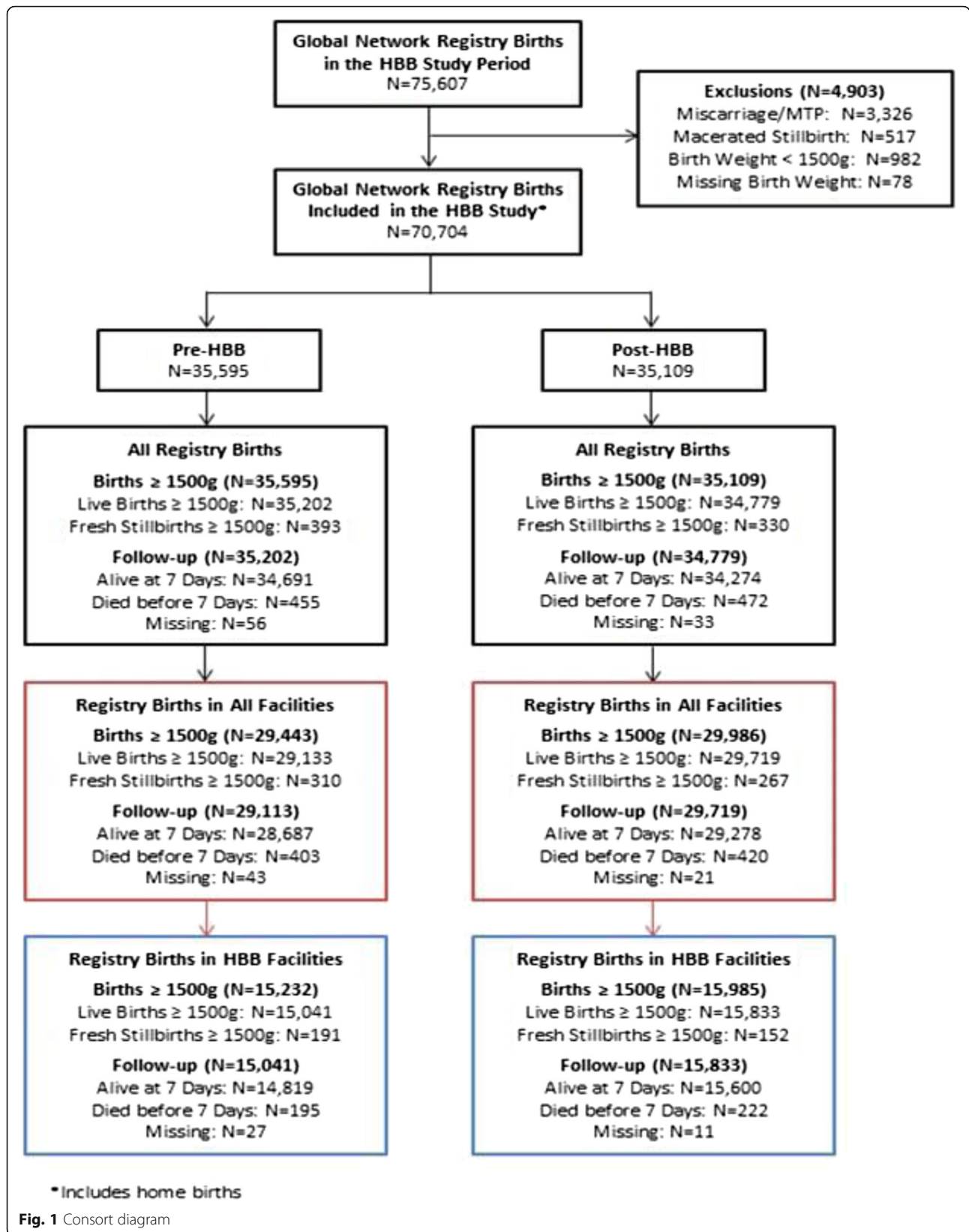


Table 2 Mortality among registry births ≥ 1500 g pre-post HBB intervention

	All Registry Births ≥ 1500 g				Registry Births ≥ 1500 g in HBB Trained Facilities			
	Pre n/N (Rate/1000)	Post n/N (Rate/1000)	Estimates ^a of Pre-Post Differences in Mortality Rates (95 % CI)	P	Pre n/N (Rate/1000)	Post n/N (Rate/1000)	Estimates ^a of Pre-Post Differences in Mortality Rates (95 % CI)	P
Total								
Perinatal deaths	848/35,539 (23.9)	802/35,076 (22.9)	-0.14 (-3.15, 2.86)	0.92	386/15,205 (25.4)	374/15,974 (23.4)	2.34 (-3.11, 7.80)	0.39
Fresh stillbirths	393/35,595 (11.0)	330/35,109 (9.4)	1.38 (-0.61, 3.37)	0.17	191/15,232 (12.5)	152/15,985 (9.5)	3.75 (-0.21, 7.70)	0.06
Death by day 1 ^b	660/35,539 (18.6)	620/35,076 (17.7)	-0.02 (-2.51, 2.48)	0.99	295/15,205 (19.4)	297/15,974 (18.6)	0.81 (-3.65, 5.26)	0.72
Early neonatal death by day 7	455/35,146 (12.9)	472/34,746 (13.6)	-1.53 (-3.79, 0.73)	0.18	195/15,014 (13.0)	222/15,822 (14.0)	-1.41 (-5.45, 2.64)	0.49
Kenya								
Perinatal deaths	232/8947 (25.9)	202/8494 (23.8)	1.03 (-5.66, 7.71)	0.75	124/3223 (38.5)	98/3477 (28.2)	11.71 (0.39, 23.03)	0.04
Fresh stillbirths	155/8972 (17.3)	114/8510 (13.4)	2.92 (-2.21, 8.04)	0.24	83/3235 (25.7)	57/3481 (16.4)	11.27 (0.95, 21.59)	0.03
Death by day 1	204/8947 (22.8)	183/8494 (21.5)	0.25 (-5.69, 6.19)	0.93	108/3223 (33.5)	92/3477 (26.5)	8.09 (-2.05, 18.24)	0.11
Early neonatal death by day 7	77/8792 (8.8)	88/8380 (10.5)	-1.89 (-4.92, 1.14)	0.20	41/3140 (13.1)	41/3420 (12.0)	0.52 (-4.40, 5.43)	0.83
Nagpur, India								
Perinatal deaths	209/9483 (22.0)	239/9768 (24.5)	-2.92 (-8.05, 2.21)	0.25	103/4038 (25.5)	130/4367 (29.8)	-4.11 (-14.05, 5.82)	0.40
Fresh stillbirths	88/9514 (9.2)	90/9784 (9.2)	0.08 (-2.88, 3.04)	0.95	47/4053 (11.6)	57/4373 (13.0)	-1.27 (-6.80, 4.26)	0.64
Death by day 1	145/9483 (15.3)	168/9768 (17.2)	-2.11 (-5.91, 1.69)	0.26	71/4038 (17.6)	102/4367 (23.4)	-5.07 (-12.57, 2.43)	0.17
Early neonatal death by day 7	121/9395 (12.9)	149/9678 (15.4)	-3.05 (-7.53, 1.44)	0.17	56/3991 (14.0)	73/4310 (16.9)	-2.96 (-12.79, 6.88)	0.54
Belgaum, India								
Perinatal deaths	407/17,109 (23.8)	361/16,814 (21.5)	2.17 (-2.28, 6.62)	0.32	159/7944 (20.0)	146/8130 (18.0)	1.05 (-4.94, 7.04)	0.71
Fresh stillbirths	150/17,109 (8.8)	126/16,815 (7.5)	1.48 (-1.21, 4.17)	0.26	61/7944 (7.7)	38/8131 (4.7)	2.49 (-0.78, 5.76)	0.13
Death by day 1	311/17,109 (18.2)	269/16,814 (16.0)	2.33 (-1.58, 6.25)	0.22	116/7944 (14.6)	103/8130 (12.7)	0.87 (-3.88, 5.63)	0.70
Early neonatal death by day 7	257/16,959 (15.2)	235/16,688 (14.1)	0.73 (-3.50, 4.96)	0.72	98/7883 (12.4)	108/8092 (13.3)	-1.39 (-5.42, 2.64)	0.47

^a Estimated mean differences obtained from a mixed model with cluster as a random factor and time period as a fixed factor

^b Death by day 1 includes fresh stillbirths

The primary outcome was the difference in PMR among all registry births ≥ 1500 g pre-post HBB training (Table 2). There was no significant difference in the PMR among all registry births ≥ 1500 g pre-post training or in the 7-day NMR. The pre-post results for all HBB-trained facilities were similar. However, in the Kenyan HBB-trained facilities, the PMR and FSBP decreased. The pre-post changes in mortality in the HBB trained facilities in India were not significant (Table 2).

The increase in the proportion of LBW births in the post period prompted an exploratory post hoc analysis of the mortality data stratified by birth weight (1500–2499 vs. ≥ 2500 g) and of the mortality data stratified by birth weight and site (Table 3). There were no significant differences in the overall registry birth outcomes pre-post training: the pre-post LBW PMR was 139.4 vs. 122.7 ($p = 0.25$); the pre-post FSBP was 72.1 vs. 55.0 ($p = 0.16$); and the pre-post 7-day NMR was 73.1 vs. 71.8 ($p = 0.91$) among all registry births. Tests of the interaction terms in the model above showed no evidence of a site by HBB intervention interaction ($p > 0.33$), but showed relatively strong evidence of a three-way site by HBB intervention by birth weight strata interaction ($p < 0.0001$). At the registry (population) level, the mortality

rates for LBW newborns in Belgaum decreased post-intervention, with reductions ranging from 46 % in SBs to 17 % in 7-day mortality. There was no reduction in Belgaum in mortality for newborns ≥ 2500 g and there was no reduction for either birthweight category in Nagpur and Kenya (Table 3).

At the HBB facility level, the PMR was reduced by 34 % and the SB rate by 54 % in Belgaum in post hoc analyses, but there was no reduction in mortality rates in Nagpur. There were too few LBW newborns in HBB facilities in Kenya to provide precise estimates of changes in mortality rates. In sum, there was no reduction in mortality in normal weight newborns at any of the sites in our post hoc analyses. Finally, analysis of mortality rate over the pre-post periods by 3-month intervals in HBB-trained facilities verified that there was no change in the mortality rates beyond the expected variability of the sample (95 % CI) (Fig. 2).

Discussion

To our knowledge, this is the first study to test a common package of resuscitation interventions, including HBB training, equipment and extensive monitoring activities, in multiple sites in sub-Saharan Africa and India.

Table 3 Mortality among registry births ≥ 1500 g pre-post HBB intervention stratified by birth weight

	Birth weight 1500–2499 g				≥ 2500 g			
	Estimates ^a of Mortality Rates (95 % CI)			P-value	Estimates ^a of Mortality Rates (95 % CI)			P-value
	Pre	Post	Difference		Pre	Post	Difference	
All registry births	3853	5000			31,405	29,922		
Perinatal deaths	139.4 (112.9, 166.0)	122.7 (96.1, 149.2)	16.7 (–12.1, 45.5)	0.25	14.6 (12.2, 17.0)	14.3 (11.9, 16.7)	0.3 (–2.1, 2.7)	0.82
Fresh stillbirths	72.1 (51.4, 92.8)	55.0 (34.3, 75.7)	17.1 (–6.8, 41.0)	0.16	7.1 (5.4, 8.9)	6.1 (4.4, 7.9)	1.0 (–0.9, 2.9)	0.28
END ^b by day 7	73.1 (55.4, 90.8)	71.8 (54.1, 89.5)	1.3 (–20.9, 23.5)	0.91	7.5 (6.0, 9.0)	8.2 (6.7, 9.7)	–0.7 (–2.4, 0.9)	0.38
Kenya	256	267			8429	8145		
Perinatal deaths	234.3 (174.0, 294.6)	212.5 (152.2, 272.8)	21.8 (–63.5, 107.1)	0.59	20.3 (15.0, 25.7)	18.2 (12.9, 23.6)	2.1 (–3.4, 7.6)	0.43
Fresh stillbirths	143.4 (87.4, 199.3)	107.0 (51.1, 162.9)	36.4 (–42.2, 114.9)	0.34	13.9 (9.9, 18.0)	10.6 (6.6, 14.7)	3.3 (–1.9, 8.5)	0.19
END ^b by day 7	105.1 (58.6, 151.7)	115.3 (68.8, 161.9)	–10.2 (–76.0, 55.6)	0.75	6.5 (3.6, 9.3)	7.7 (4.8, 10.5)	–1.2 (–4.2, 1.7)	0.39
Nagpur, India	1336	1441			8152	8336		
Perinatal deaths	103.6 (78.9, 128.3)	104.6 (79.9, 129.3)	–1.0 (–24.3, 22.4)	0.93	10.5 (6.8, 14.1)	11.6 (8.0, 15.2)	–1.2 (–5.3, 3.0)	0.57
Fresh stillbirths	41.5 (25.6, 57.3)	40.6 (24.8, 56.4)	0.9 (–17.4, 19.1)	0.92	3.9 (2.2, 5.7)	4.1 (2.4, 5.9)	–0.2 (–2.7, 2.3)	0.87
END ^b by day 7	64.2 (40.8, 87.6)	66.4 (43.1, 89.8)	–2.2 (–25.7, 21.3)	0.85	6.6 (3.8, 9.3)	7.5 (4.8, 10.3)	–1.0 (–3.6, 1.7)	0.46
Belgaum, India	2261	3292			14,824	13,441		
Perinatal deaths	89.2 (75.8, 102.6)	55.4 (42.0, 68.9)	33.8 (16.4, 51.2)	< 0.001	14.0 (11.1, 16.9)	13.8 (10.8, 16.7)	0.2 (–3.1, 3.5)	0.89
Fresh stillbirths	39.2 (30.2, 48.1)	21.1 (12.1, 30.0)	18.1 (5.5, 30.7)	< 0.01	4.4 (2.8, 6.0)	4.1 (2.5, 5.7)	0.2 (–1.5, 1.9)	0.78
END ^b by day 7	52.2 (41.8, 62.7)	35.0 (24.6, 45.5)	17.2 (3.3, 31.1)	0.02	9.7 (7.1, 12.3)	9.7 (7.1, 12.3)	–0.0 (–3.6, 3.6)	1.00
HBB Facility Births	1988	2550			13,205	13,393		
Perinatal deaths	140.1 (102.9, 177.4)	102.8 (65.5, 140.0)	37.4 (–15.3, 90.1)	0.16	18.8 (14.4, 23.2)	15.9 (11.5, 20.4)	2.9 (–1.9, 7.7)	0.23
Fresh stillbirths	71.4 (40.8, 102.0)	38.1 (7.5, 68.7)	33.3 (–10.0, 76.6)	0.13	10.4 (7.0, 13.8)	7.2 (3.8, 10.7)	3.2 (–0.8, 7.2)	0.12
END ^b by day 7	76.5 (52.2, 100.8)	66.4 (42.3, 90.4)	10.2 (–23.7, 44.0)	0.55	8.4 (5.8, 11.1)	8.8 (6.1, 11.4)	–0.3 (–3.6, 2.9)	0.84
Kenya	146	152			3073	3319		
Perinatal deaths	266.6 (160.4, 372.8)	149.2 (43.0, 255.4)	117.4 (–32.7, 267.6)	0.12	32.9 (22.4, 43.5)	22.0 (11.5, 32.6)	10.9 (–0.6, 22.4)	0.06
Fresh stillbirths	148.5 (50.1, 246.8)	48.7 (–49.7, 147.0)	99.8 (–39.2, 238.9)	0.15	24.5 (16.2, 32.8)	14.3 (6.0, 22.6)	10.2 (–1.3, 21.8)	0.08
END ^b by day 7	143.6 (71.5, 215.8)	101.9 (32.0, 171.8)	41.7 (–58.7, 142.2)	0.39	8.6 (4.3, 12.8)	7.9 (3.6, 12.1)	0.7 (–3.0, 4.4)	0.69
Nagpur, India	628	695			3411	3676		
Perinatal deaths	100.7 (72.8, 128.6)	114.4 (86.5, 142.3)	–13.7 (–53.2, 25.8)	0.48	13.5 (7.0, 20.0)	14.2 (7.8, 20.7)	–0.7 (–8.8, 7.3)	0.85
Fresh stillbirths	44.1 (27.6, 60.7)	49.7 (33.1, 66.2)	–5.5 (–28.6, 17.5)	0.62	5.1 (1.7, 8.5)	5.6 (2.2, 8.9)	–0.5 (–5.3, 4.3)	0.83
END ^b by day 7	59.0 (34.0, 83.9)	67.9 (42.9, 92.8)	–8.9 (–43.5, 25.7)	0.60	8.4 (2.3, 14.5)	8.7 (2.6, 14.8)	–0.3 (–8.0, 7.4)	0.94
Belgaum, India	1214	1703			6721	6398		
Perinatal deaths	62.9 (48.8, 77.1)	41.7 (27.6, 55.9)	21.2 (3.9, 38.5)	0.02	11.3 (8.0, 14.7)	12.0 (8.6, 15.3)	–0.7 (–5.0, 3.7)	0.75
Fresh stillbirths	28.5 (18.9, 38.1)	13.2 (3.6, 22.8)	15.3 (1.7, 28.9)	0.03	3.0 (1.5, 4.5)	2.3 (0.7, 3.8)	0.8 (–0.9, 2.4)	0.34
END ^b by day 7	35.6 (26.8, 44.3)	28.9 (20.2, 37.6)	6.7 (–4.7, 18.0)	0.23	8.3 (5.5, 11.2)	9.7 (6.8, 12.6)	–1.4 (–5.5, 2.7)	0.48

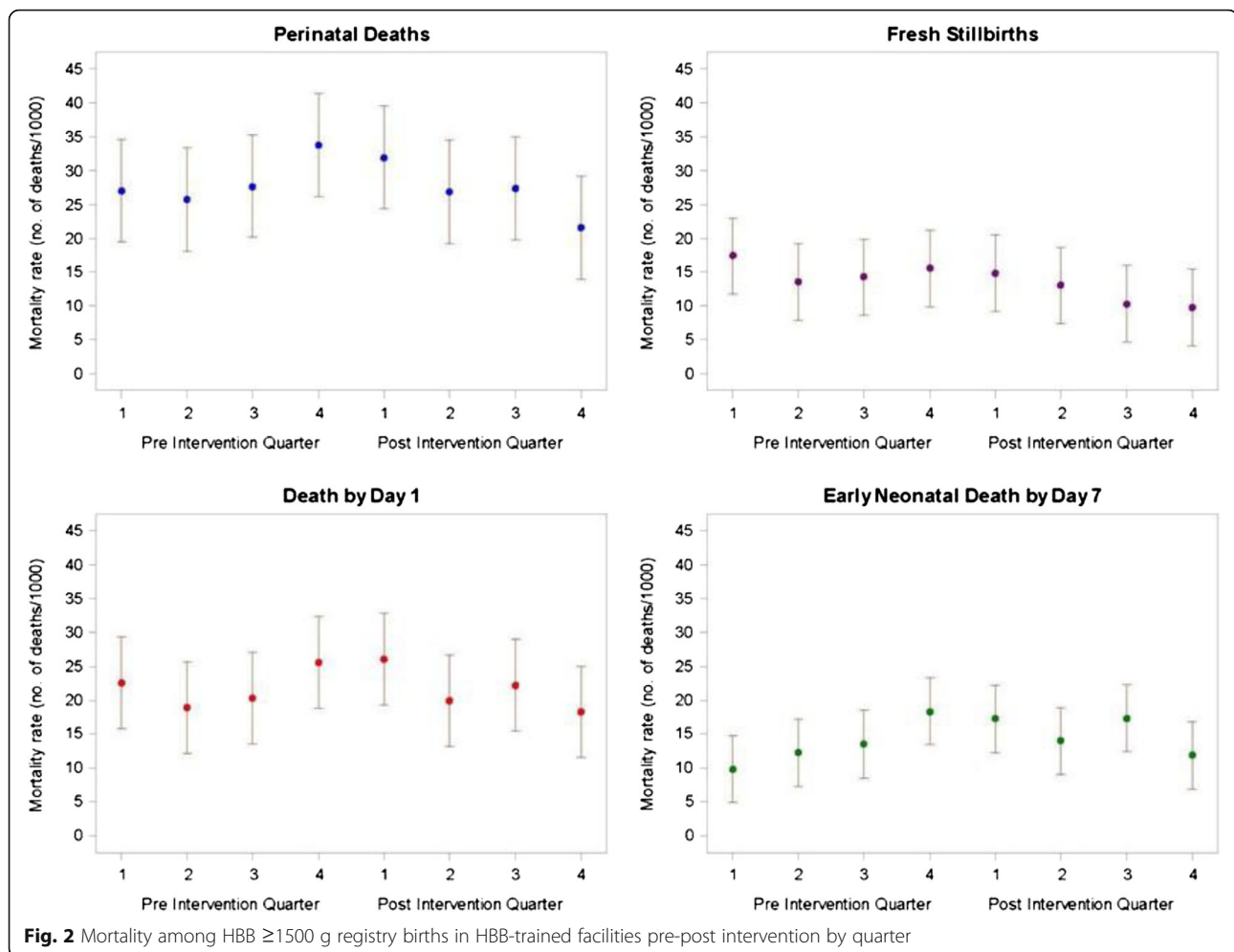
^a Estimated means obtained from a mixed model with cluster as a random factor and time period as a fixed factor

^b END early neonatal death

It is also the first study to identify a differential positive impact of HBB training of facility BAs on LBW neonatal survival at the population level (registry) and in HBB-trained facilities.

Our study had several strengths, including a large sample from low-income, semi-urban and rural communities in India and low-income, rural sites in sub-Saharan Africa, where most global PNM occurs. We had well-established methods for identifying and including

outcomes of all delivery locations (including home births) and BA training levels. Women were enrolled starting in the second trimester; pregnancy outcomes were recorded by independent, trained staff; follow-up exceeded 99 % and the data center managed all data and data analyses. The site populations were diverse: Kenyan women, compared with Indian women, were of higher parity, and delivered heavier newborns vaginally at home with traditional BAs or in clinics assisted by nurse



midwives. Finally, the HBB training was rigorous. The initial BA training was conducted by 115 MTs with facility BA teams in small, hands-on sessions with pre-post testing, followed by “refresher” training approximately 6 months later. The monitoring system was supportive and frequent. BAs that were new to the facilities were trained on an individual basis. The quality monitoring activities were also supportive and frequent, including resuscitation debriefings, death audits, daily bag-and-mask practice checks with state-of-the art equipment and training materials; scheduled and unscheduled site visits; a biweekly review of individual facility monitoring and performance data.

To evaluate the public health impact of this intervention, the primary outcome was total population mortality of neonates ≥ 1500 g, rather than mortality of infants delivered in HBB-trained facilities, and to ensure that the public health benefit was consistent with the resource intensity of the intervention, the study was designed to detect a large effect similar to the results of the Tanzanian studies. In retrospect, the decision to test the impact of HBB training on total

population mortality and to test a large effect over a relatively short time period set a high bar for the GN study, given the diversity of the sites’ health systems and the challenges of changing resuscitation behavior of all BAs within this period. Despite this high bar, the study’s design and implementation strengths provided us with a unique, unanticipated opportunity to identify a high-risk population that benefitted from the HBB intervention in both the registry (population) and HBB-trained facilities in Belgaum—LBW neonates. However, our study did not identify an overall decrease in mortality among the “normal” birthweight neonates at any of the three large sites.

Our results may not necessarily be generalizable to other countries and facility settings. Another large pre-post observational cohort study ($n = 78,500$) of HBB training in 8 Tanzanian referral hospitals included deaths among a more immature population (live births ≥ 750 g and FSB > 1 kg) and used a brief 2-month pre (baseline) period, followed by a 1-year intensive implementation period (5 HBB MTs per facility) before assessing impact the subsequent year. The study documented a trend

toward reduced deaths within 24 h and a decrease in FSB rates 1 year after the HBB implementation period, but it did not evaluate the PMR. The 2-month baseline period makes interpretation of these study results difficult; we have noted the need for longer baseline data periods because of variability in annual registry data, especially in the first two years of data collection and in times of political and facility turmoil. In addition to the duration of the baseline and implementation periods, other differences between the studies include the single vs. multi-national settings; the maturity of the birth populations; and the number and diversity of the facilities and BAs trained. Despite these differences, the GN HBB study and the Tanzanian studies shared a fundamental resuscitation strategy: both emphasized immediate drying of all non-MSBs, which focuses the BA's full attention on immediate drying of each newborn, and uses suctioning and ventilation only "as required," to identify FSBs.

We designed this prospective pre-post study in 71 diverse GN facilities in India and Kenya as a public health intervention to evaluate the training of BAs in selected facilities on the PMR of registry births in all the participating clusters and to improve the outcomes of all the babies born in the facilities—not just the registry babies—consistent with beliefs that facility deliveries will increase only when populations perceive that facilities provide quality care and babies survive. Although LBW survival was not identified prospectively as a secondary outcome, LBW neonates represent a high-risk population and an important indicator of quality of resuscitation and neonatal care. Stratification of data by birth weight and center identified the broad differential positive impact of HBB training on LBW survival. Mothers in both Indian sites are increasingly delivered in facilities by skilled BAs, but Nagpur's mothers are more highly educated, are first pregnant at an older age, and have higher c-section rates than Belgaum mothers, yet HBB training did not improve the primary or secondary outcomes in Nagpur. Belgaum had relatively low baseline PMRs, FSBs, and deaths by day 1 in both their registry and HBB-trained facilities which tended to improve further after training. But what was not previously appreciated was that LBW neonates in the Belgaum community and in their HBB-trained facilities benefitted differentially from HBB training.

Based on this experience, we speculate that sites must collect a prolonged period of harmonized baseline data as the basis for demonstration of real mortality improvements. They should also provide careful monitoring of resuscitation behavior to ensure that positive behavior change is sustained, that accurate delivery room records are maintained, and that comprehensive data are analyzed promptly and made widely available to identify

patterns of change. This will allow identification of high-risk populations who may be the target of increased efforts to improve quality of care. High-risk populations are especially difficult to identify in sites that are not resuscitating and recording all LBW and FSBs or are misclassifying deaths. Such problems are often identified in retrospect by an *increase* in mortality after an intervention is introduced. Time and support will be required to ensure real, sustained behavior change in highly diverse LMIC. As perinatal care improves in such settings, increased facility deliveries and ongoing resuscitation training and quality monitoring may reduce the number of MSBs, asphyxiated newborns and early neonatal deaths previously misclassified as SBs, further improving the PMR [15].

This study, like recent randomized controlled trials [16–18], highlights the complexity of scaling-up evidence-based interventions from high income countries in diverse populations and settings in LMIC. We need more information about the many subtle and striking but often unknown and unrecorded differences that make an intervention fail or succeed.

Conclusions

Rapid scale up of HBB training of GN facility BAs was not associated with significant reductions in perinatal mortality, stillbirth, or neonatal mortality among all neonates ≥ 1500 g in a population-based registry in three diverse sites in India and Kenya; however, secondary analysis of outcomes stratified by BW demonstrated reductions in mortality measures in both registry and HBB-trained facilities in Belgaum with no survival benefit to normal BW populations in the three sites.

Abbreviations

AAP, American Academy of Pediatrics; BA, birth attendant; C-section, cesarean section delivery; ENC, essential newborn care; FSB, fresh stillbirth; FSB, fresh stillbirth rate; GN, Global Network for Women's and Children's Health Research; HBB, Helping Babies Breathe; LBW, newborns weighing 1500 to 2499 g; LMIC, low and middle income countries; MSB, macerated stillbirth newborns; MT, master trainer; NICHD, *The Eunice Kennedy Shriver National Institute of Child Health and Human Development*; NMR, neonatal mortality rate; PMR, perinatal mortality rate (FSB + LB dying within 7 days) \div all births; Registry, maternal and child health registry; SB, stillbirth

Acknowledgments

We gratefully acknowledge funding from the Norwegian Agency for Development Cooperation (Norad), the Laerdal Foundation, and NICHD (U01 HD040636; U01 HD058322 and U10 HD078439; HD U01058326; U01 HD058326-0451, U10 HD076461, U01 HD042372, U10 HD076457), the generous advice and guidance provided by the HBB Advisory Board (Drs. Bill Keenan, Alan Jobe, and Petter Andreas Steen) and the American Academy of Pediatrics Master Training team: Drs. Susan Niermeyer, Bill Keenan, Beena Kamath-Rayne, George A Little; Susan B. Clarke, MS CNS and Victoria A. Flanagan, MS RN, and the Master Trainers and Facilitators from the participating facilities. Members of the HBB Study Group of the Global Network for Women's and Children's Health Research include the following: *Belgaum, India*—Roopa M Bellad, Shivaprasad S Goudar, Bhala S Kodkany, Manjunath S Somannavar, Veena R Herekar, Sunil S Vernekar, Narayan V Honnungar, Chandrashekhar C Karadiguddi, KLE University's Jawaharlal Nehru Medical College, Belgaum, Karnataka; *Nagpur, India*—Akash Bang, Mahatma Gandhi Institute of Medical

Sciences, Sewagram, Maharashtra; Archana Patel, Savita R Bhargava, Kunal Kurhe, Rakesh Kukde, Lata Medical Research Foundation, Nagpur; Kenya—Peter Gisore, Fabian Esamai, David Muyodi, Coletta Makokha, Department of Child Health and Paediatrics, Moi University School of Medicine, Eldoret; *United States*—Waldemar A Carlo, University of Alabama at Birmingham, Birmingham, AL; Elizabeth M McClure, Sreelatha Meleth, Dennis D Wallace, Norman Goco, Janet L Moore, RTI International, Durham, NC; Patricia L Hibberd, Massachusetts General Hospital, Boston, MA; Edward A Liechty, Sherri Bucher, School of Medicine, Indiana University, Indianapolis, IN; Prof Richard J Derman, Frances J Jaeger, Department of Obstetrics and Gynecology, Christiana Care Health Services, Newark, DE; Linda L Wright, Eunice Kennedy Shriver National Institute of Child Health and Human Development, Bethesda, MD.

Funding

The study was funded by grants from Norad, Laerdal Foundation and the Eunice Kennedy Shriver National Institute of Child Health and Human Development (NICHD). NICHD staff had input into the study design, data interpretation and writing of the report. RTI staff had access to all the study data. The corresponding author wrote the first draft of the manuscript and had final responsibility for the decision to submit for publication.

Availability of data and materials

The datasets generated analysed for the current study will be made available at the *Eunice Kennedy Shriver* National Institute of Child Health and Human Development (NICHD) Data and Specimen Hub (DASH), a publicly accessible online archive: <https://dash.nichd.nih.gov/>.

Authors' contributions

LLW and WAC conceived the original study. LLW, EMM, WAC, SM, SSG, AP, PLH and RJD developed the proposal. NG, LLW, EMM, SM and SB prepared the study protocol, manual of procedures, and data collection instruments. LLW and NG coordinated the overall execution of the study. RMB, SSG, RJD; AB, PLH, AP; FE, PG, SB implemented and monitored the study. Training was done by RMB; AB, AP; PG, SB. Data collection was completed by RMB; AB; PG. Quality monitoring activities were supervised by RMB; AB, AP; FE, PG. SM, LLW, AB, RMB, NG reviewed the quality monitoring data. SM wrote the plan of analysis in collaboration with LLW, EMM and WAC. SM performed the statistical analysis in collaboration with LLW, WAC, SSG, RMB, RJD, AB and PLH. LLW and WAC prepared the manuscript with input from the authors, especially RMB and AB. All study group members reviewed and approved the final manuscript.

Competing interests

The authors declare that they have no competing interests. The corresponding author was a staff member of NICHD; she received no payment to produce this manuscript. The authors' views do not necessarily represent those of the NICHD or the partners.

Consent for publication

Not applicable.

Ethics approval and consent to participate

The HBB study and registry protocols were approved by the ethics review committees of the sites and partner institutions, RTI International Office of Research Protection Institutional Review Board, Durham, NC, USA; Christiana Care Institutional Review Board, Newark, DE; Jawaharlal Nehru Medical College (JNMC) Institutional Ethics Committee on Human Subjects Research, Belgaum, India; Karnataka State Health & Family Welfare Society, Bangalore, India; Partners Human Research Committee, Boston, MA, USA; Lata Medical Research Foundation Research Ethics Review Committee, Nagpur, India; the India Council of Medical Research; Indiana University Office of Research Administration, Indianapolis, IN, USA; Moi University School of Medicine Institutional Research and Ethics Committee, Eldoret, Kenya. An independent data-monitoring committee appointed by the NICHD reviewed the study protocol and progress.

Author details

¹KLE University's Jawaharlal Nehru Medical College, Belgaum, Karnataka, India. ²Mahatma Gandhi Institute of Medical Sciences, Sewagram, Maharashtra, India. ³University of Alabama at Birmingham, Birmingham, AL,

USA. ⁴RTI International, Durham, NC, USA. ⁵Department of Obstetrics and Gynecology, Christiana Care Health Services, Newark, DE, USA.

⁶Massachusetts General Hospital, Boston, MA, USA. ⁷Lata Medical Research Foundation, Nagpur, India. ⁸Indira Gandhi Government Medical College, Nagpur, India. ⁹Department of Child Health and Paediatrics, Moi University School of Medicine, Eldoret, Kenya. ¹⁰School of Medicine, Indiana University, Indianapolis, IN, USA. ¹¹Eunice Kennedy Shriver National Institute of Child Health and Human Development, Bethesda, MD, USA. ¹²5800 Nicholson Lane, #1206, Rockville, MD 20852, USA.

Received: 24 December 2015 Accepted: 29 July 2016

Published online: 15 August 2016

References

- Niermeyer S. From the Neonatal Resuscitation Program to Helping Babies Breathe: Global impact of educational programs in neonatal resuscitation. *Semin Fetal Neonatal Med.* 2015;20(5):300–8.
- Msemo G, Massawe A, Mmbando D, et al. Newborn mortality and fresh stillbirth rates in Tanzania after Helping Babies Breathe training. *Pediatrics.* 2013;131(2):e353–60.
- Vossius C, Lotto E, Lyanga S, et al. Cost-effectiveness of the "helping babies breathe" program in a missionary hospital in rural Tanzania. *PLoS One.* 2014; 9(7):e102080.
- World Health Organization. Making pregnancy safer: the critical role of the skilled attendant. A joint statement by WHO, ICM and FIGO. Geneva: World Health Organization; 2004.
- Montagu D, Yamey G, Visconti A, Harding A, Yoong J. Where do poor women in developing countries give birth? A multi-country analysis of demographic and health survey data. *PLoS One.* 2011;6(2):e17155.
- Shiferaw S, Spigt M, Godefrooij M, Melkamu Y, Tekie M. Why do women prefer home births in Ethiopia? *BMC Pregnancy Childbirth.* 2013;13(1):5.
- Roro MA, Hassen EM, Lemma AM, Gebreyesus SH, Afework MF. Why do women not deliver in health facilities: a qualitative study of the community perspectives in south central Ethiopia? *BMC Res Notes.* 2014;7:556.
- Goudar SS, Carlo WA, McClure EM, et al. The Maternal and Newborn Health Registry Study of the Global Network for Women's and Children's Health Research. *Int J Gynaecol Obstet.* 2012;118(3):190–3.
- Sustainable Development Policy & Practice. UN Summit to adopt the post-2015 development agenda, September 25–27, 2015. New York: Sustainable Development Policy & Practice; 2015.
- Bang A, Bellad R, Gisore P, et al. Implementation and evaluation of the Helping Babies Breathe curriculum in three resource limited settings: does Helping Babies Breathe save lives? A study protocol. *BMC Pregnancy Childbirth.* 2014;14:116.
- Goudar SS, Stolka KB, Koso-Thomas M, et al. Data quality monitoring and performance metrics of a prospective, population-based observational study of maternal and newborn health in low resource settings. *Reprod Health.* 2015;Suppl 2:S2.
- Saleem S, McClure EM, Goudar SS, et al. A prospective study of maternal, fetal and neonatal deaths in low- and middle-income countries. *Bull World Health Organ.* 2014;92(8):605–12.
- Kak LP, Johnson J, McPherson R, Keenan W, Schoen E. Helping Babies Breathe: Lessons learned guiding the way forward. Kent: Laerdal Foundation; 2015.
- World Health Organization. Essential Newborn Care Course. Geneva: World Health Organization; 2010. [9 Dec 2015]; Available from: http://www.who.int/maternal_child_adolescent/documents/newborncare_course/en/.
- Lawn JE, Blencowe H, Oza S, et al. Every newborn: progress, priorities, and potential beyond survival. *Lancet.* 2014;384(9938):189–205.
- Althabe F, Belizan JM, McClure EM, et al. A population-based, multifaceted strategy to implement antenatal corticosteroid treatment versus standard care for the reduction of neonatal mortality due to preterm birth in low-income and middle-income countries: the ACT cluster-randomised trial. *Lancet.* 2015;385(9968):629–39.
- Azad K, Barnett S, Banerjee B, et al. Effect of scaling up women's groups on birth outcomes in three rural districts in Bangladesh: a cluster-randomised controlled trial. *Lancet.* 2010;375(9721):1193–202.
- Boone P, Mann V, Eble A, et al. Community health and medical provision: impact on neonates (the CHAMPION trial). *BMC Pediatr.* 2007;7:26.

Terms and Conditions

Springer Nature journal content, brought to you courtesy of Springer Nature Customer Service Center GmbH (“Springer Nature”).

Springer Nature supports a reasonable amount of sharing of research papers by authors, subscribers and authorised users (“Users”), for small-scale personal, non-commercial use provided that all copyright, trade and service marks and other proprietary notices are maintained. By accessing, sharing, receiving or otherwise using the Springer Nature journal content you agree to these terms of use (“Terms”). For these purposes, Springer Nature considers academic use (by researchers and students) to be non-commercial.

These Terms are supplementary and will apply in addition to any applicable website terms and conditions, a relevant site licence or a personal subscription. These Terms will prevail over any conflict or ambiguity with regards to the relevant terms, a site licence or a personal subscription (to the extent of the conflict or ambiguity only). For Creative Commons-licensed articles, the terms of the Creative Commons license used will apply.

We collect and use personal data to provide access to the Springer Nature journal content. We may also use these personal data internally within ResearchGate and Springer Nature and as agreed share it, in an anonymised way, for purposes of tracking, analysis and reporting. We will not otherwise disclose your personal data outside the ResearchGate or the Springer Nature group of companies unless we have your permission as detailed in the Privacy Policy.

While Users may use the Springer Nature journal content for small scale, personal non-commercial use, it is important to note that Users may not:

1. use such content for the purpose of providing other users with access on a regular or large scale basis or as a means to circumvent access control;
2. use such content where to do so would be considered a criminal or statutory offence in any jurisdiction, or gives rise to civil liability, or is otherwise unlawful;
3. falsely or misleadingly imply or suggest endorsement, approval, sponsorship, or association unless explicitly agreed to by Springer Nature in writing;
4. use bots or other automated methods to access the content or redirect messages
5. override any security feature or exclusionary protocol; or
6. share the content in order to create substitute for Springer Nature products or services or a systematic database of Springer Nature journal content.

In line with the restriction against commercial use, Springer Nature does not permit the creation of a product or service that creates revenue, royalties, rent or income from our content or its inclusion as part of a paid for service or for other commercial gain. Springer Nature journal content cannot be used for inter-library loans and librarians may not upload Springer Nature journal content on a large scale into their, or any other, institutional repository.

These terms of use are reviewed regularly and may be amended at any time. Springer Nature is not obligated to publish any information or content on this website and may remove it or features or functionality at our sole discretion, at any time with or without notice. Springer Nature may revoke this licence to you at any time and remove access to any copies of the Springer Nature journal content which have been saved.

To the fullest extent permitted by law, Springer Nature makes no warranties, representations or guarantees to Users, either express or implied with respect to the Springer nature journal content and all parties disclaim and waive any implied warranties or warranties imposed by law, including merchantability or fitness for any particular purpose.

Please note that these rights do not automatically extend to content, data or other material published by Springer Nature that may be licensed from third parties.

If you would like to use or distribute our Springer Nature journal content to a wider audience or on a regular basis or in any other manner not expressly permitted by these Terms, please contact Springer Nature at

onlineservice@springernature.com